

Customer :

customer

Customer part :

customer part

Comment :

Comment

S1=0.08

S2=0.1

Tmax=326

Tp S2=365.0

PI=0.46

HI=10

Sample =12042.8

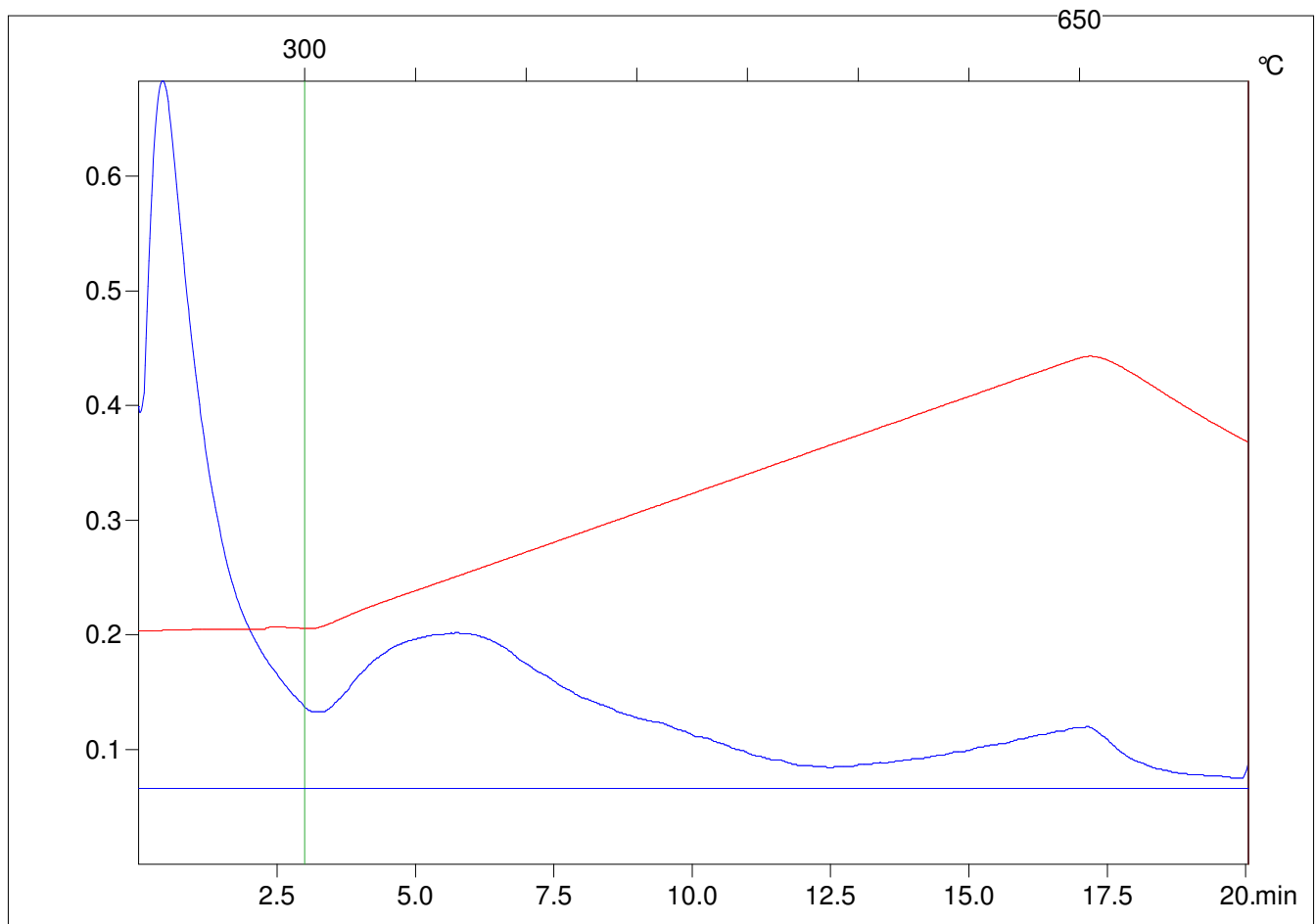
Method =Bulk Rock

Cycle=Basic

KFID(10\*9)=1167

Qty =70.6

TOC=0.97



C:\VINC\PK141015\PK066.R00 : FID pyrolysis graphic

State

Pyro Status

Oxi Status